



LASER ISSE

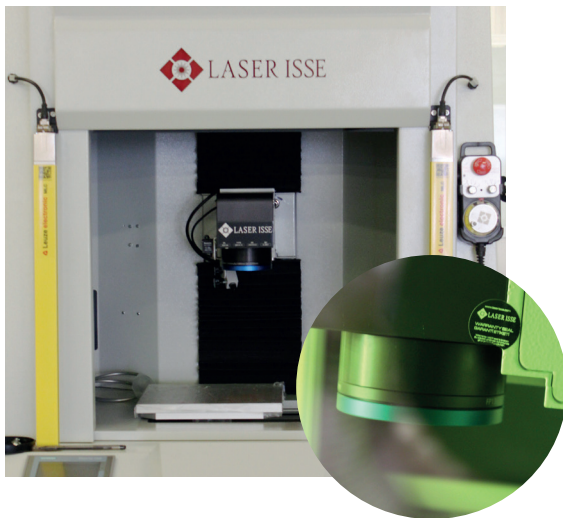
JEWELRY | Laser Solutions

A Cut Above with a **Mark of Quality**



www.laserisse.com

JEWELRY | Laser Solutions



LASERISSE has been doing laser manufacturing business for 17 years who has involved to focus also jewelery market since 2010 becoming global pioneering company.

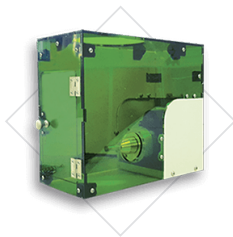
LASERISSE designed all in one systems which can make Laser Marking, Laser Cutting and Laser Engraving.

Our laser solutions are able to make very fine laser marking, picture laser marking from jpeg files directly, 2D and 3D laser engravings in same software and very fast laser cutting without loss.

All machines offers faster cutting ability than others which makes easy cut piece to the tray.

- ◆ Fastest, most precise jewelry cutting
- ◆ Deep 2D and 3D laser engraving
- ◆ No precious metal loss
- ◆ Versatile laser marking
- ◆ Photo and artwork
- ◆ Maintenance free

Optional Equipments



Rotary Axis

Rotary stage is incorporated into the system to mark on cylindrical items like rings, bracelets and bearing. Our software ensures precise circular movement.



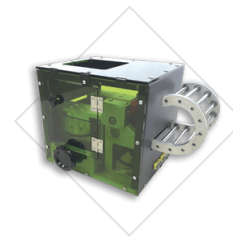
Extraction Unit

A variety of toxic fumes and particles are generated when different materials are being processed. Fume, dust and particles need to be removed to protect the operator and ensure the quality of application.



Clamping Device

The clamping device minimizes movement of the part due to heat expansion which occurs during the marking and cutting process.

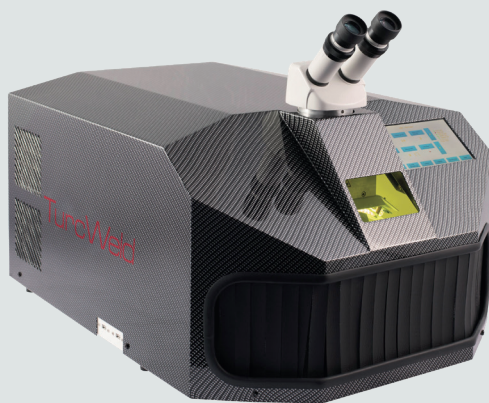


Auto Feeder

You can engrave and cut objects from a metal sheet continuously without repositioning the parts in every cycle.

JW100

Desktop Mini Jewelry Welder



LASER SPECIFICATION	JW100
Laser Source	Nd:YAG Lamp Pumped
Wavelength	1064nm
Average Power (W)	100
Pulse Energy (J)	100
Peak Power (kW)	10
Frequency (Hz)	1 - 2, single shot
Pulse Width (ms)	0,5 - 20, adjustable in 0,5 increments
Beam Diameter (mm)	0,2 - 2mm, adjustable in 0,1 increments
Aiming System	Crosshair & Laser Pointer
Microscope	Acromatic stereo microscope, f/1; 120 mm Optical protection against UV and laser radiation
Cooling	Integrated Air To Water with automatic sleep mode and DI filter
Working Area Lighting	Cold light source(LED)
Pulse Shaping	20 standard shapes + 10 programmable
Programs	50 Programs
Display	Color Graphic Display 5.7"
Video Camera + LCD Screen	Optional: Video camera on trinocular tube + LCD flat screen
Warm-up Time	30 - 60 sec.
Working Temperature	15 C - 40 C
Humidity	20 - 90% non condensing
Power Supply	110V + 10%, 60 Hz, 20A
Weight (Kg)	65
Dimensions (mm)	500 (W) x 515 (H) x 660 (D)

F20-F200 Fiber Laser Marking / Engraving / Micro-Cutting Systems

Laser power from 20W to 200W

LASER SPECIFICATION	F20 S	F50 S	F70 S	F100 S	F200 S
Laser Source	Yb: Fiber - SPI				
Average Power	20W	50W	70W	100W	200W
Beam Quality M ²	<1,6				
Max. Peak Power (kW)	>10				
Max. Pulse Energy (mJ)	>1,2				>1,5
Pulse Repetition frequency range	1-4000				1-4000
PulseTune Waveforms	40	38	37	37	40
Pulse Duration Range (ns)	3-500	6-500	10-500	4-2000	9-2000
Output Power Stability p-p%	<5				
Cooling	Air				
Wavelength	1060 nm				
Marking Field	120 mm x 120 mm				
Working Distance*	178 mm ± 2 mm				

WORKING CONDITIONS

Electricity Supply	AC 220V ± 10% 50Hz, For USA, 110V ± %5, 60 Hz				
Ambient Tempature Range °C	0 - 45	0 - 40	5 - 40	10 - 40	
Relative Humidity	5 - 90% RH (Non Condensing)				
Control System & Plug-in	Windows-based Software with PC				

OPTIONAL EQUIPMENTS

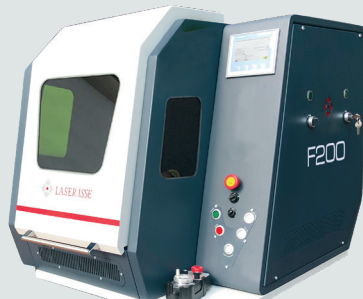
Clamping Device, Rotary Axis, Class 1 Enclosure, Lens Options, Extraction Unit, X-Y Stage, Rotary Index, Autofocus, Auto Feeder

Lens Options	F - theta 100	F - theta 163	F - theta 254	F - theta 330	F - theta 420
Relative Humidity	70 mm x 70 mm	120 mm x 120 mm	180 mm x 180 mm	240 mm x 240 mm	300 mm x 300 mm
Control System & Plug-in	85 mm ± 2	178 mm ± 2	298 mm ± 2	355 mm ± 2	495 mm ± 2

Standard System Designs



CLASS 4
DESKTOP



CLASS 1
DESKTOP CABINET



CLASS 1
FREESTANDING

Technical data is subject to change without prior notice.



More than 50+ Enterprises in 10+ Countries

With the trust of our customer's, we are able to make a better tomorrow, utilising state-of-the-art laser technology to reach perfect production.

ALLIANCE



265 Industrial Drive
Wauconda, IL 60084



+1 (847) 487 19 45



info@alliancelasersales.com

LASER ISSE



Ferhatpaşa SB Mah. Ali Rıza Efendi Cad. No:
26 / 2B1, 34540 Çatalca / İstanbul, Turkey



+90 (212) 671 15 64



info@laserisse.com

www.laserisse.com